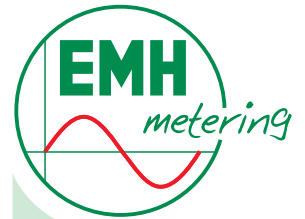


# MIZ



- ✓ For industrial applications and billing purposes
- ✓ Smallest possible standard housing 1 pitch
- ✓ DIN-Rail mounting acc. to IEC 60715
- ✓ Bus capable: M-Bus-interface
- ✓ Impulse output S0
- ✓ LC-display with 6 digits
- ✓ Measuring of instantaneous values
- ✓ With **EC type-examination certificate** acc. to directive 2004/22/EC (MID = **M**easuring **I**nstrument **D**irective)



## EMH metering

GmbH & Co. KG

Südring 5  
19243 Wittenburg  
GERMANY

Tel. +49 38852 645-0  
Fax +49 38852 645-129

E-mail [info@emh-metering.com](mailto:info@emh-metering.com)  
Web [www.emh-metering.com](http://www.emh-metering.com)



Edition: 08.09.2010  
MIZ-DAB-E-1.30

## Mini Industry Meter - MIZ

|                                   |   |   |
|-----------------------------------|---|---|
| <b>Voltage</b>                    | 2-wire meter  | 230 V   |
| <b>Current</b>                    |   | 0,25 - 5(25) A or 0,25 - 5(32) A  |
| <b>Starting current</b>           |   | 20 mA   |
| <b>Frequency</b>                  |   | 50 Hz   |
| <b>Accuracy</b>                   | active energy   | Cl. B acc. to EN 50470-1, -3  |
| <b>Measuring types</b>            | active energy   | +A  |
| <b>Meter constants</b>            | LED output  | 5 000 Imp./kWh<br>1 000 Imp./kWh  |
| <b>Energy registers</b>           |   | 1 tariff register   |
| <b>Data retention time</b>        |   | without voltage in the EEPROM, at least 20 years  |
| <b>Display</b>                    | version<br>number of digits<br>digitness<br>digit size in the value range<br>display of instantaneous values                            | LCD<br>6<br>5,1<br>approx. 2,7 x 6,25 (W x H) mm<br>scrolling   |
| <b>Operation (optional)</b>       | operation button  | for operation of display  |
| <b>Data interfaces (optional)</b> | M-Bus   | acc. to DIN EN 13757-2, -3 (300...9600 baud)  |
| <b>Output</b>                     | number<br>S0-output<br>pulse length   | 1<br>maximum 27 V DC, 27 mA (passive)<br>50 ms  |
| <b>Energy supply</b>              | capacitor power supply  | from the measuring voltage  |
| <b>Power consumption</b>          | voltage path  | < 0,4 W   |
| <b>EMC-characteristics</b>        | isolation resistance<br>surge voltage   | isolation: 4 kV AC, 50 Hz, 1 min<br>EMC: 4 kV, impulse 1,2/50 µs, 2 Ω,<br>ISO: 6 kV, impulse 1,2/50 µs, 500 Ω   |
| <b>Temperature range</b>          | resistance against HF-fields<br>specified operating range<br>limit range for operation,<br>storage and transport                        | 10 V/m (under load)<br>-25 °C...+55 °C<br>-40 °C...+70 °C   |
| <b>Relative humidity</b>          |   | max. 95 %, non-condensing, acc. to IEC 62052-11, EN 50470-1 and IEC 60068-2-30  |
| <b>Housing</b>                    | dimensions<br>class of protection<br>degree of protection housing<br>degree of protection terminals<br>material<br>fire characteristics | DIN 43880 (1 pitch wide = 18 mm)<br>II<br>IP 20<br>IP 20<br>polycarbonate glass-fibre reinforced, without halogen, recyclable<br>acc. to IEC 62052-11 |
| <b>Environmental conditions</b>   | mechanical<br>electromagnetic<br>planned site of installation   | M1 acc. to Measuring Instruments Directive<br>E2 acc. to Measuring Instruments Directive<br>indoor acc. to EN 50470-1                                 |
| <b>Weight</b>                     |   | approx. 67,5 g  |
| <b>Connection cross-section</b>   | current- / neutral terminals<br>auxiliary terminals   | maximum 6 mm <sup>2</sup><br>maximum 2,5 mm <sup>2</sup>  |
| <b>Further features</b>           | measuring of instantaneous values   | power, voltage, current, frequency and power factor   |

### Following meter types are available:

|                 | „Silver“       | „Gold“                                  | „Premium“   |
|-----------------|----------------|---|---|
| <b>Voltage</b>  | 230 V          | 230 V                                   | 230 V   |
| <b>Current</b>  | 0,25-5(25) A   | 0,25-5(32) A                            | 0,25-5(32) A  |
| <b>Features</b> | impulse output | impulse output,<br>instantaneous values | impulse output,<br>instantaneous values,<br>M-Bus-interface,<br>operation button,<br>display lighting |

Product specifications are subject to change without notice!

